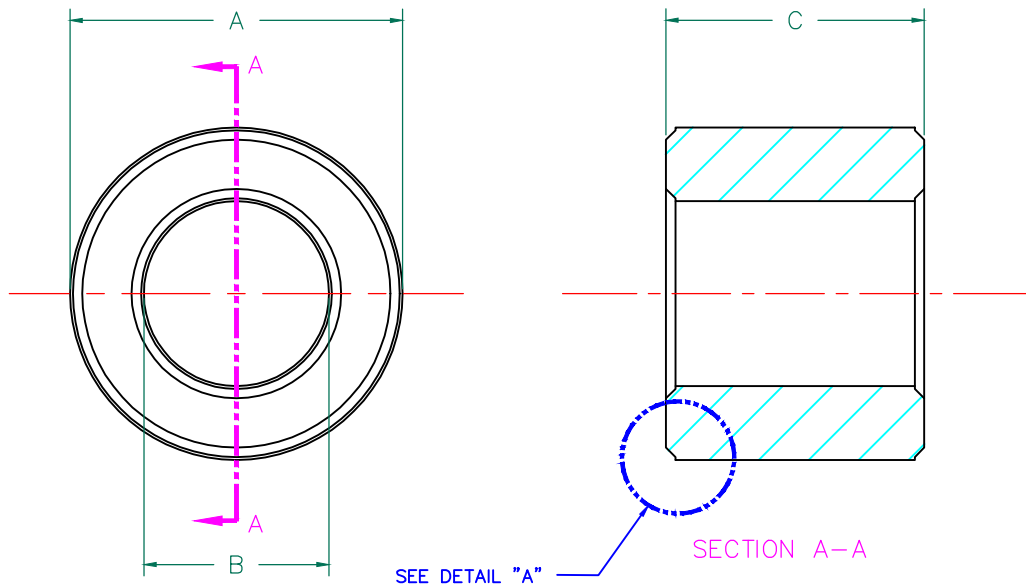


SCALE DRAWING 1:1



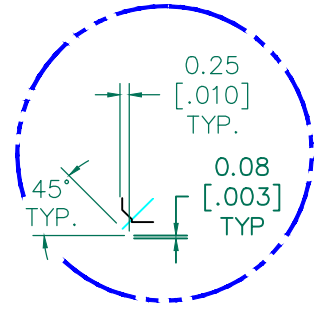
LFB090050-000



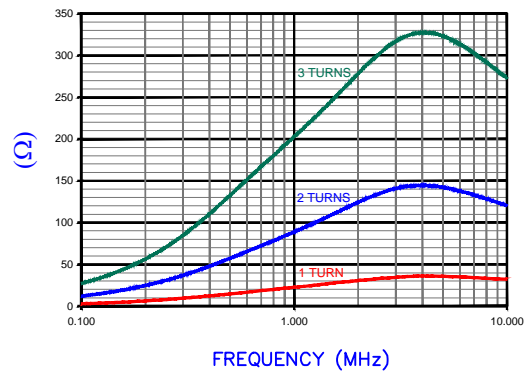
SECTION A-A
Z vs. FREQUENCY
1 TURN, 2, AND 3 TURNS
(REF. ONLY)

IMPEDANCE (Z) NET ^{SEE NOTE 1}

FREQUENCY	500 KHz	1 MHz	5 MHz
NOMINAL (REF.) 1 TURN	12 Ω	21 Ω	36 Ω
MINIMUM (SPEC.) 1 TURN	- Ω	17 Ω	- Ω
NOMINAL (REF.) 2 TURNS	58 Ω	90 Ω	140 Ω
NOMINAL (REF.) 3 TURNS	132 Ω	200 Ω	320 Ω



DETAIL "A"
CHAMFER
SCALE=5:1



AGILENT E4991A RF Impedance/Material Analyzer
HP 16092A Test Fixture REF# 2512

TEST CRITERIA

METER HP4396A OR EQUIVALENT
FIXTURE HP16092A OR EQUIVALENT

NOTES: UNLESS OTHERWISE SPECIFIED

1. NET IMPEDANCE IS IMPEDANCE OF THE FERRITE CORE ONLY. ALL IMPEDANCE CONTRIBUTION FROM TEST WIRE AND FIXTURES HAS BEEN REMOVED.
2. COSMETIC SPECIFICATION REFER TO WI-QA-038.

FERRITE CORE DIMENSIONS (SPEC):

A	9.00 [.354]	±	0.25 [.010]
B	5.00 [.197]	±	0.25 [.010]
C	7.00 [.275]	±	0.18 [.007]

WEIGHT/1000 1.04 kgs [2.29 Lbs]

DIMENSIONS ARE IN mm [INCHES].				This print is the property of Laird Tech. and is loaned in confidence subject to return upon request and with the understanding that no copies shall be made without the written consent of Laird Tech. All rights to design or invention are reserved.	
E	UPDATE MATERIAL	05/26/10	Jcai		
D	UPDATE COMPANY LOGO	07/09/08	TMB		
C	REMOVE MIN SPEC @ 500 KHz	02/10/06	TMB		
B	UPDATE TOLS. ON DIMENSIONS A,B&C ADD TEST REF TO CURVE	12/22/04	JRK		
A	ORIGINAL DRAFT	08/27/02	TMB	PROJECT/PART NUMBER: LFB090050-000	REV E PART TYPE: FERRITE CORE DRAWN BY: TMB
REV	DESCRIPTION	DATE	INT	DATE: 08/27/02	SCALE: 5:1 MATERIAL: Mn-Zn
				CAD # LFB090050-000-E	TOOL # B0354