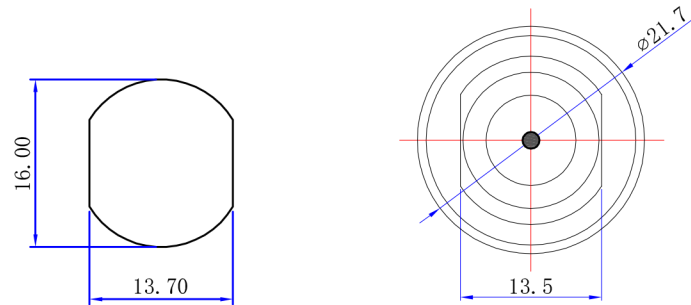




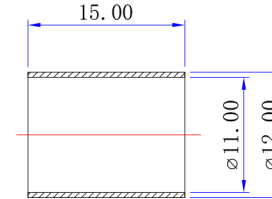
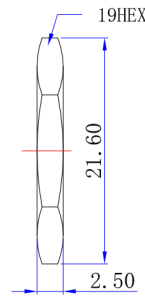
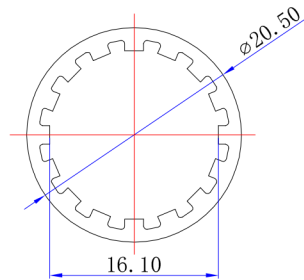
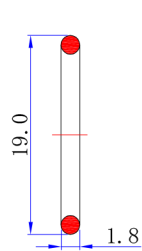
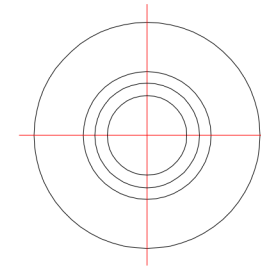
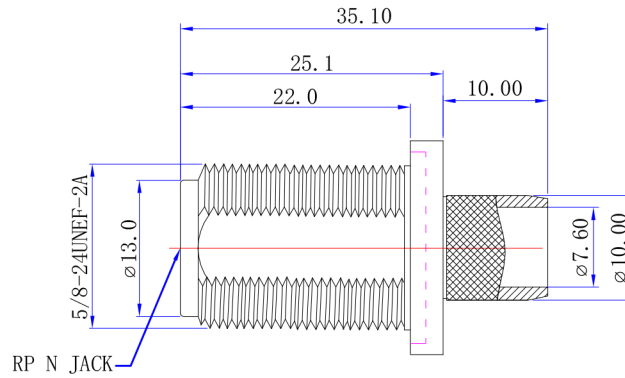
Product NO.

BC-222-400

REV	DESCRIPTION	DWN	DATE	APPROVEN
R1.0	First issue	Gavin	2021/03/09	JIM.KING



Recommended hole size



**Specifications**

Impedance: 50 Ohms

Frequency Range:0-6G

VSWR:1.5MAX

Working Voltage:1000 VRMS(max at sea level)

Dielectric Withstanding Voltage:1500 vrms(max at sea level)

Insulation Resistance:5000 MOhms min

Durability Mating:500 Cycles min

Temperature Range:-65°C TO +165°C

No	Connector color
BC-222-400-RD	Body electrophoresis: Red
BC-222-400-BL	Body electrophoresis: Blue
BC-222-400-BK	Body electrophoresis: Black

NO	DESCRIPTION	MATERIAL	FINISH	QTY
7	COPPER TUBE	BRASS	NICKEL	1
6	FERRULE	BRASS	NICKEL	1
5	WASHER	IRON	NICKEL	1
4	O-RING	RUBBER	RED	1
3	PIN	BRASS	GOLD	1
2	INSUKATON	PTFE	NONE	1
1	BODY	BRASS	Electrophoresis	1

-TOLERANCES-  
UNLESS OTHERWISE  
SPECIFIED

UNLESS OTHERWISE SPECIFIED  
TOLERANCES FOR MILLIMETERS ARE:  
0.5 - 8mm ± 0.20mm  
8 - 30mm ± 0.25mm  
30 - 120mm ± 0.30mm

## BIG CAT CABLES

Appd: JIM.KING

Check:

Draw: Gavin

PART DESCRIPTION: **RP FEMALE**  
RP WATERPROOF N CRIMP JACK FOR LMR400 CABLE

P/N: **BC-222-400**

Date	Scale	Unit	Type	Page
2021.03.09	Free	MM	Z	1/1