

Feed-through terminal for direct mount, Screw connection, Mounting type: Mounting surface, Rated cross-section: 4 mm², Width: 6 mm, Colour: Blue

Business data

| | |
|--|--|
| Packaging unit | 100 |
| Quantity unit | PC |
| Weight per piece (not including packaging) | 4.8 g |
| Weight per piece (including packaging) | 5.18 g |
| Unit of weight | G |
| Customs number | 85369010 |
| Country of origin | DE |
| Prio-Article | 1018.2 |
| Product description | Feed-through terminal for direct mount |

1018.5

RKB 4 BU

Technical data

Dimensions

| | |
|--------|---------|
| Length | 27 mm |
| Width | 6 mm |
| Height | 27.5 mm |

Ratings

| | |
|---|-------------------|
| Rated voltage | 500 V |
| Rated current | 32 A |
| Rated cross-section | 4 mm ² |
| Rated impulse voltage | 4 kV |
| Overvoltage category | III |
| Contamination degree | 3 |
| Maximum power dissipation for nominal condition | 1.02 W |

Technical data

Connection data

| | |
|--|---------------------|
| Connection principle | Screw connection |
| Connection position | Lateral |
| Connections | 2 |
| Number of terminals per level | 2 |
| Number of levels | 1 |
| Wire cross-section single-core (rigid) / stranded, min. | 0.2 mm ² |
| Wire cross-section single core (rigid)/stranded, max. | 4 mm ² |
| Wire cross-section stranded, min. | 0.2 mm ² |
| Wire cross-section stranded, max. | 4 mm ² |
| Wire cross-section stranded with wire-end ferrules, min. | 0.2 mm ² |
| Wire cross-section stranded with wire-end ferrules, max. | 4 mm ² |
| Wire cross-section AWG, min. | 22 |
| Wire cross-section AWG, max. | 12 |
| Stripping length | 9 mm |
| Screw head | Slotted |
| Screw threading | M 2,5 |
| Tightening torque, min. | 0.4 Nm |
| Tightening torque, max. | 0.8 Nm |

Materials

| | |
|---------------------------|---------------|
| Insulation housing | Polyamide 6.6 |
| Flammability class UL 94 | V-2 |
| Working temperature, min. | -40 °C |
| Working temperature, max. | 105 °C |

Further technical data

| | |
|--------------------------------|---------------|
| Mounting type | Mounting face |
| Gauge plug acc. to EN 60 947-1 | A3 |
| End plate required | ✓ |

Print

| | |
|--------|------|
| Colour | Blue |
|--------|------|

1018.5

RKB 4 BU

Technical data

Environmental Product Compliance

| | |
|--------------------------------|------------|
| REACH Conform | yes |
| REACH Reference date | 2022-01-17 |
| REACH Candidate Substance Note | No |
| RoHS Conform | yes |

Approvals

Standards and regulations

| | |
|----------------------|----------------|
| EAC approval | TR ZU 004/2011 |
| EAC approval granted | yes |

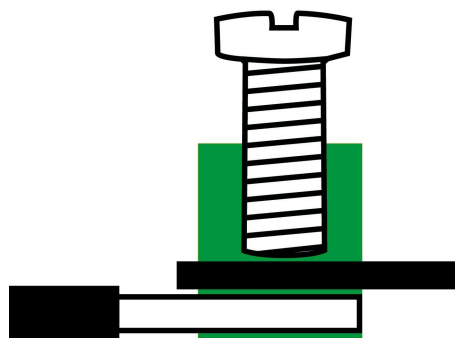
KEMA KEUR approval

| | |
|---|---------------------|
| KEMA KEUR approval | EN 60947-7-1:2009 |
| KEMA KEUR approval granted | yes |
| KEMA rated voltage | 500 V |
| KEMA rated current | 32 A |
| KEMA rated impulse voltage | 6 kV |
| KEMA wire cross-section single core (rigid), min. | 0.2 mm ² |
| KEMA wire cross-section single-core (rigid), max. | 4 mm ² |
| KEMA wire cross-section stranded, min. | 0.2 mm ² |
| KEMA wire cross-section stranded, max. | 4 mm ² |

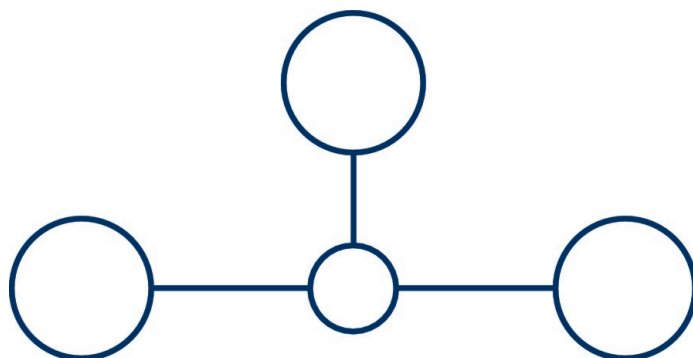
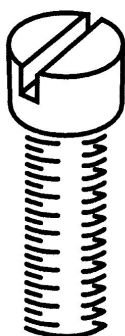
UL Recognized

| | |
|---|---------|
| UL approval | UL 1059 |
| UL Usegroup C: rated voltage | 300 V |
| UL Usegroup C: rated current | 20 A |
| UL wire cross-section single-core (rigid) AWG, min. | 22 |
| UL wire cross-section single-core (rigid) AWG, max. | 12 |
| UL wire cross-section stranded AWG, min. | 22 |
| UL wire cross-section stranded AWG, max. | 12 |
| UL torque | 7 Lb In |
| UL wire material | Cu |
| UL factory wiring | yes |
| UL field wiring | yes |
| UL Recognized | yes |

Media



M2.5



EAC

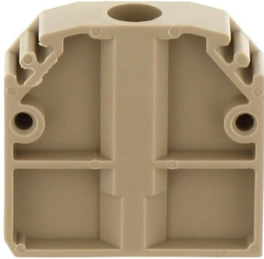


1018.5

RKB 4 BU

Accessories

End support



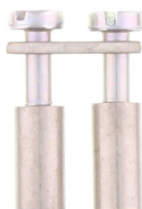
End support, Mounting type: Mounting surface, Width: 7 mm, Colour: Beige

General order data

| Product number: | Article name | GTIN (EAN) | Packaging unit |
|-----------------|--------------|---------------|----------------|
| 2135.2 | EH 1 BG | 4044211049546 | 50 |

Accessories

Cross-connector



Cross-connector, No. of poles: 2, Mounting type: Can be screwed on, Width: 10.5 mm, Rated cross-section: 4 mm², Colour: natural

General order data

| Product number: | Article name | GTIN (EAN) | Packaging unit |
|-----------------|--------------|---------------|----------------|
| 2087.0 | Q 2 | 4044211048952 | 50 ST |



Cross-connector, No. of poles: 4, Mounting type: Can be screwed on, Width: 22.7 mm, Rated cross-section: 4 mm², Colour: natural

General order data

| Product number: | Article name | GTIN (EAN) | Packaging unit |
|-----------------|--------------|---------------|----------------|
| 2089.0 | Q 4 | 4044211048976 | 20 ST |



Cross-connector, No. of poles: 10, Mounting type: Can be screwed on, Width: 59.3 mm, Rated cross-section: 4 mm², Colour: natural

General order data

| Product number: | Article name | GTIN (EAN) | Packaging unit |
|-----------------|--------------|---------------|----------------|
| 2090.0 | Q 10 | 4044211048983 | 10 ST |

Creation date 14.02.2022 21:55:02
Subject to technical changes

1018.5 RKB 4 BU

Accessories

Cross-connector

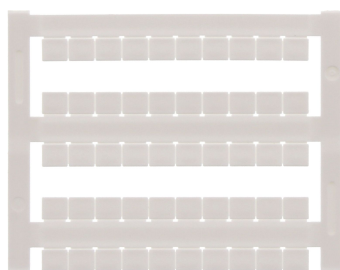


Cross-connector, No. of poles: 3, Mounting type: Can be screwed on, Width: 16.6 mm, Rated cross-section: 4 mm², Colour: natural

General order data

| Product number: | Article name | GTIN (EAN) | Packaging unit |
|-----------------|--------------|---------------|----------------|
| 2088.0 | Q 3 | 4044211048969 | 50 ST |

Quick marking



Terminal marker / Pocket Maxicard, Length: 5 mm, Width: 6 mm, Colour: White

General order data

| Product number: | Article name | GTIN (EAN) | Packaging unit |
|-----------------|----------------|---------------|----------------|
| 4702.7 | PMC SB 6/50 WH | 4044211089986 | 500 ST |

1018.5

RKB 4 BU

Accessories

Screwdriver



Screwdriver with bare blade, Colour: Black-grey

General order data

| Product number: | Article name | GTIN (EAN) | Packaging unit |
|-----------------|--------------|---------------|----------------|
| 1086.0 | SDB 0,6x3,5 | 4044211014797 | 1 ST |
