



# TAI-SAW TECHNOLOGY CO., LTD.

No. 3, Industrial 2nd Rd., Ping-Chen Industrial District,  
Taoyuan, 324, Taiwan, R.O.C.

TEL: 886-3-4690038 FAX: 886-3-4697532

E-mail: [tstsales@mail.taisaw.com](mailto:tstsales@mail.taisaw.com) Web: [www.taisaw.com](http://www.taisaw.com)

## Approval Sheet For Product Specification

Issued Date:

Product Name: SAW Filter 433.92MHz SMD 3.8×3.8 mm

TST Parts No.:TA0537A

Customer Parts No.:\_\_\_\_\_

Company: _____
Division: _____
Approved by : _____
Date: _____

Checked by: \_\_\_\_\_ Elvis Chiu

Approval by: \_\_\_\_\_ Francis Chen

Date: \_\_\_\_\_ 2006/01/24



# TAI-SAW TECHNOLOGY CO., LTD.

No. 3, Industrial 2nd Rd., Ping-Chen Industrial District,  
Taoyuan, 324, Taiwan, R.O.C.

TEL: 886-3-4690038 FAX: 886-3-4697532

E-mail: [tstsales@mail.taisaw.com](mailto:tstsales@mail.taisaw.com) Web: [www.taisaw.com](http://www.taisaw.com)

## SAW Filter 433.92 MHz

MODEL NO.: TA0537A

REV. NO.:2

### A. MAXIMUM RATING:

1. Input Power Level: 10 dB<sub>m</sub>
2. DC voltage: 3 V
3. Operating Temperature: -10°C to +60°C
4. Storage Temperature: -40°C to +85°C

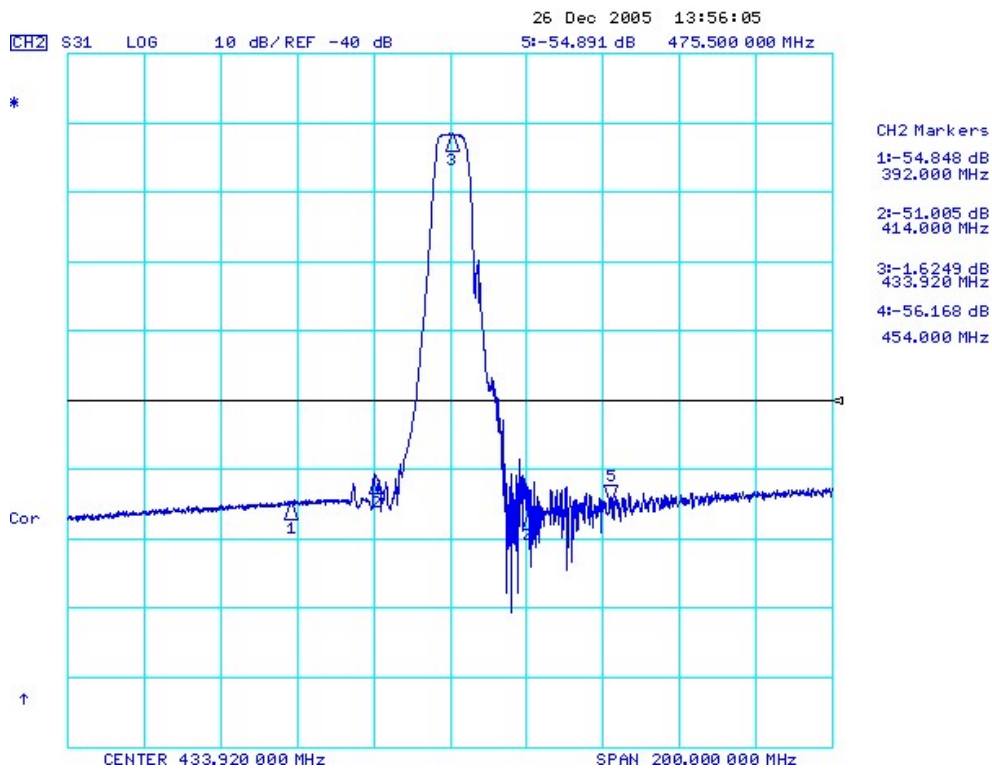
RoHS Compliant  
Lead free  
Lead-free soldering

### B. ELECTRICAL CHARACTERISTICS:

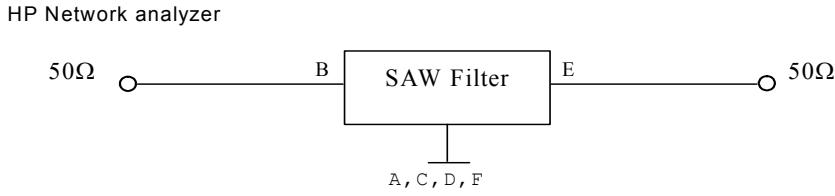
Item	Unit	Min.	Typical	Max.
Center frequency F <sub>c</sub>	MH	-	433.92	-
Insertion loss 433.05 ~ 434.79 MHz IL	dB	-	1.9	3.7
Amplitude ripple 433.05 ~ 434.79 MHz	dB	-	0.3	1.5
Attenuation (Reference level from 0 dB)				
389.0 ~ 392.0 MHz	dB	42	54	-
411.0 ~ 414.0 MHz	dB	40	50	-
454.0 ~ 457.0 MHz	dB	40	51	-
475.5 ~ 478.5 MHz	dB	42	52	-
Source impedance Z <sub>s</sub>	Ω	-	50	-
Load impedance Z <sub>L</sub>	Ω	-	50	-

Note1. No matching network required for operation at 50 Ω

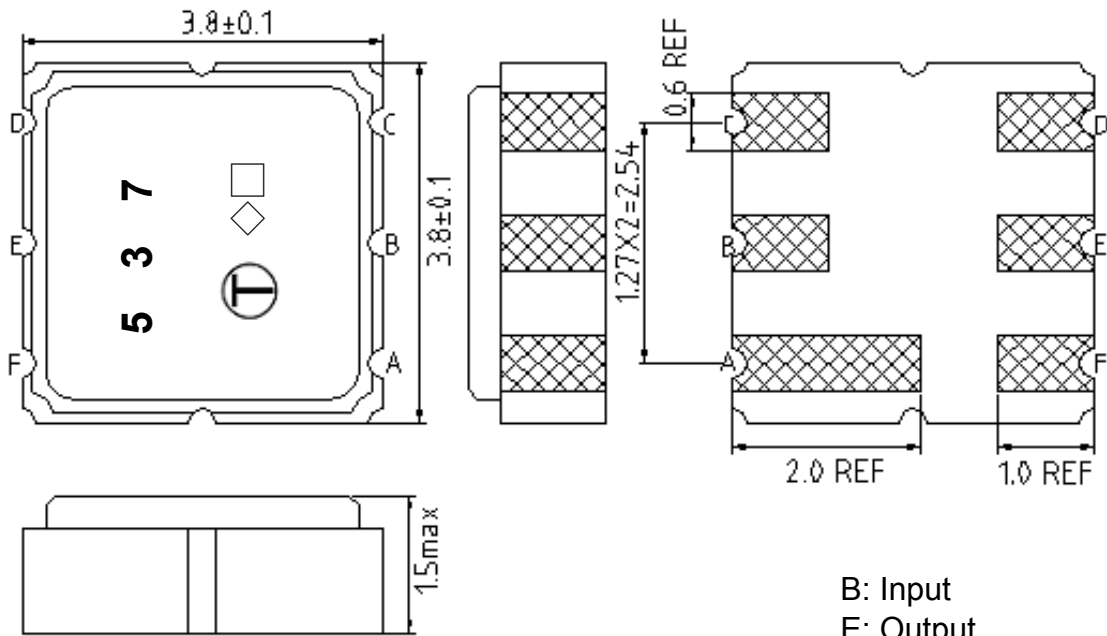
## C. FREQUENCY CHARACTERISTICS :



**D. MEASUREMENT CIRCUIT:**



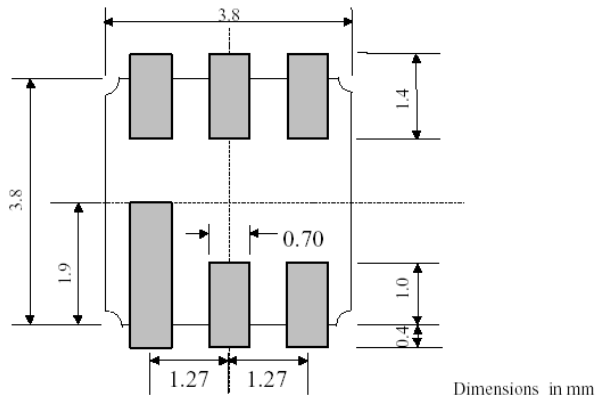
**E. OUTLINE DRAWING:**



B: Input  
 E: Output  
 A,C,D,F: Ground  
 Unit : mm  
 ◇ : Year Code  
 □ : Date code

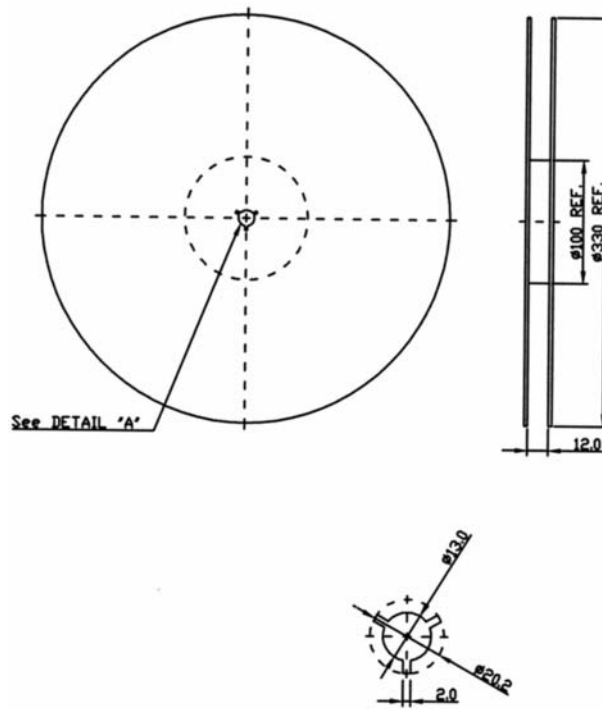
	Odd Year	Even Year
Year Code	A	a

**F. PCB FOOTPRINT:**



## G. PACKING:

### 1. REEL DIMENSION



### 2. TAPE DIMENSION

