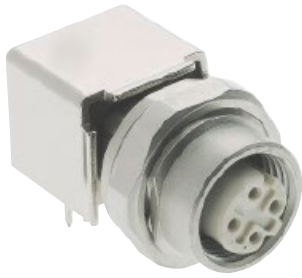
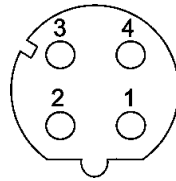


M12 PCB adapter D-coded



Mating face



D-coding
Mating face
acc. to IEC 61076-2-101



03

Identification

Part No.

Drawing

Dimensions in mm

M12 PCB adapter

Female, D-coding,
angled, 4 poles

without fixing hole

IP20

21 03 381 4410¹⁾

IP20

21 03 381 4411²⁾

IP67

21 03 381 4430¹⁾



with fixing hole

IP20

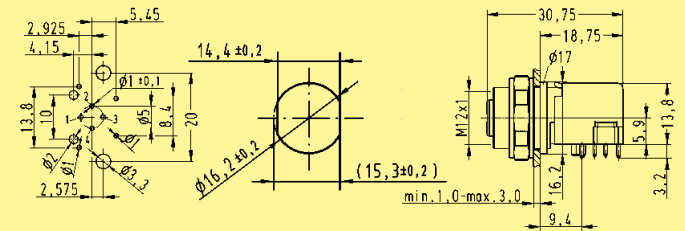
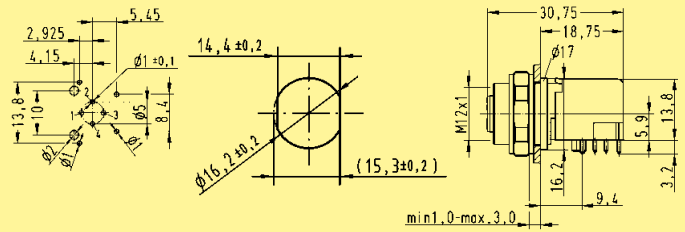
21 03 381 4412¹⁾

IP20

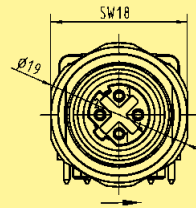
21 03 381 4413²⁾

IP67

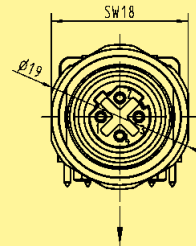
21 03 381 4432¹⁾



1) Cable direction to the right



2) Cable direction to the bottom



03
88